



For more information visit www.classicbond.co.uk or contact your local ClassicBond distributor:

www.classicbond.co.uk



50 Year proven
life expectancy

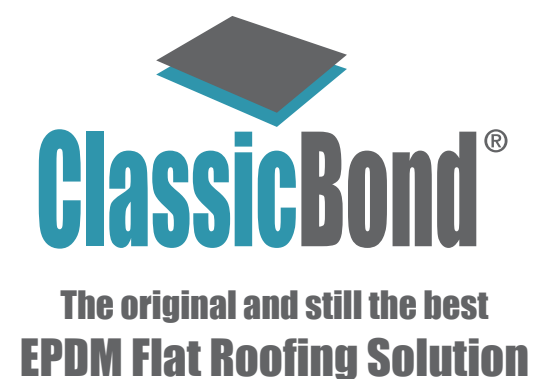
Fast and safe,
no heat used
to install

Product Selector & Installation Guide



Your one piece
flat roof

Thicker, stronger
& cleaner



What Makes ClassicBond EPDM the right choice for you:

- Standard 1.2mm membrane is nearly 10% thicker than leading competitors
- Only EPDM with 50 year history
- One piece sheet equals no joints... no leaks
- Heat & flame free installation - lower insurance costs
- Excellent resistance to extremes of temperature, UV & ageing
- High puncture resistance - will not tear, split or crack
- Quick & clean to install
- Choice of 1.2mm or Premium 1.5mm thicknesses
- Maintenance free
- Environmentally friendly
- Perfect for refurbishments and new build projects

ClassicBond EPDM flat roofing system has been awarded the **British Board of Agrément certificate, No. 11/4853**, with an service life in excess of 35 years. The BBA carries out assessment, testing, approval and certification of products and systems for the construction industry against national requirements, internationally recognised standards or other relevant technical specifications.

Manufactured by the worlds leading roofing manufacturer, no other EPDM membrane can match the strong track record of the ClassicBond EPDM flat roofing system.

ClassicBond EPDM's success is due to its many material characteristics of longevity, weatherability and elasticity.



**SERVICE LIFE IN
EXCESS OF 35 YEARS**



Exceptional Durability

ClassicBond EPDM membranes offer unmatched resistance to all extremes of weather.

Tests prove that roofs were performing like new after three decades of exposure.

High Quality

Manufactured by the world leaders in EPDM roofing.

ClassicBond membranes are BBA & CE approved and hold the highest European fire ratings.



Strength

Large choice of roll widths, incredible strength and flexibility to suit any flat roof project.

ClassicBond EPDM has been the roofers choice for projects of all sizes and complexity the world over.



ClassicBond EPDM Membranes

Professional grade EPDM membranes are all BBA approved and available in 1.2mm and premium 1.5mm thicknesses.

Features

Available in 3.05, 4.57, 6.10, 7.63 & 9.15m wide by 30.5m long. 1.2mm & 1.5mm thick sheets. BBA & CE approved EPDM roofing membrane.



ClassicBond Deck Adhesive

This high strength, low odour water based acrylic adhesive is specifically designed for use with ClassicBond EPDM roofing membrane to timber deck surfaces.

Features

Designed to be roller applied to flat roof surfaces. Available in 2.5L (7-10m² coverage), 5L (14-20m² coverage) and 15L (42-60m² coverage). For full usage details refer to ClassicBond Installation Manual.



ClassicBond Bonding Adhesive

A high strength, solvent based contact adhesive, specifically designed and manufactured for EPDM flat roofing installations. Perfect for bonding ClassicBond EPDM membrane to horizontal and vertical surfaces. Suitable for a range of surfaces e.g. timber, brickwork, metal, PVC and concrete.

Features

Available in 1L (1.5-2m² coverage), 2.5L (4-5m² coverage) and 5L (8-10m² coverage). Designed to be roller applied to the substrate and sheet backing. For full usage details refer to ClassicBond Installation Manual.



ClassicBond Spray Bonding Adhesive

A high strength, spray applied contact adhesive, specifically designed, manufactured and tested for EPDM flat roofing installations. Perfect for bonding ClassicBond EPDM membrane to horizontal and vertical surfaces. Suitable for a range of surfaces e.g. timber, brickwork, metal, PVC and concrete.

Features

Available in 19Kg canister (up to 100m² coverage), offering fast and clean application rates. For full usage details refer to ClassicBond Technical Data Bulletins.



ClassicBond EPDM Primer

Designed for one step cleaning and priming of EPDM membrane and other suitable surfaces prior to the application of ClassicBond Pressure Sensitive (PS) accessories such as 75mm PS Seam Tape, 150mm PS Cover Strip, 225mm Uncured Flashing, PS Pipe Seals and PS Walkway Pads.

Features

Available in 0.5L and 1L containers. For application details refer to ClassicBond Installation Manual.



228mm Pressure Sensitive Elastoform Tape

ClassicBond PS Flashing Tape is easily moulded and highly adaptable to irregular shapes and surfaces. This self-curing tape is used for flashing and waterproofing of roof details such as corners, penetrations, outlets and other flat roof details.

Features

228mm wide by 15.25m long rolls. Easily adaptable to irregular shapes and surfaces. Must be used with ClassicBond EPDM Primer. For full usage details refer to the ClassicBond Installation Manual.



152mm Pressure Sensitive Overlayment Strip

ClassicBond 152mm PS Overlayment Strip is used for butt jointing of membrane, seaming in metal edging, drip edges and fastening plates. This EPDM tape has a semi cured top surface with a Pressure Sensitive underside.

Features

152mm by 30.5m long rolls. Resists tearing, cracking and abrasion in all weather conditions. Used when seaming with 75mm PS tape is not possible. Must be used with ClassicBond EPDM Primer. For full usage details refer to the ClassicBond Installation Manual.

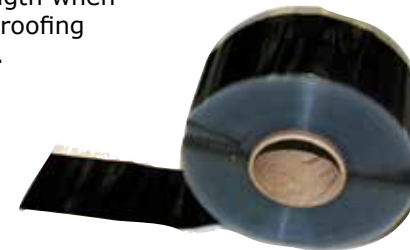


76mm Pressure Sensitive Seam Tape

ClassicBond PS Seam Tape manufactured with a clear poly backing for easier on site application. ClassicBond seam tape offers over 30% greater peel and sheer strength when compared to market rivals. This tape is designed for use with ClassicBond EPDM roofing systems to fuse the EPDM membranes together when installing an overlap seam.

Features

30.5m long rolls x 76mm wide. Clear Poly Backing. To be used with ClassicBond Primer. For application details refer to ClassicBond Installation Manual.



Pressure Sensitive RUSS Strip

In common with most single ply material, non-reinforced EPDM membranes will overtime try and pull back to the centre of the membrane by up to 10%. The base tie-in (RUSS) controls the membrane movement and stops the membrane moving away from the perimeter of the roof and upstand details.

ClassicBond PS RUSS (Reinforced Universal Secure Strip) is used to mechanically secure EPDM membranes to the substrate. The strip has tape pre-applied along one edge and can be installed horizontally or vertically in conjunction with Seam Fastening Plates below the EPDM membrane for additional membrane securement.

Features

Ideal for perimeter securement and around penetrations. Used with RUSS strip to securely clamp the RUSS to the vertical or horizontal surface. Used with ClassicBond EPDM Primer. Must be used in conjunction with the appropriate fasteners for the substrate.



ClassicBond® the original EPDM

Pressure Sensitive Pipe Seals

ClassicBond EPDM PS Pipe Seals are available in two sizes – small 15-75mm and large 25-150mm in diameter. ClassicBond pipe seals are cured, pre-moulded EPDM flashings with pre-applied Seam Tape to the base and a stainless steel clamping ring.



Features

Pre-applied Seam Tape on the base of the pipe seal gives fast and simple application.
Ribbed collar for accurate cutting to pipe size.
Stainless steel clamping ring.
Must be used with ClassicBond EPDM Primer.

ClassicBond Lap Sealant

The ClassicBond lap sealant mastic cures off to give a cured rubber consistency. Ideal for sealing wall chase details and using as a finishing bead to compression type joints. Also used to protect the edges of 228mm tape if risk of submergence exists.



Features

Fast, clean, simple finish to the flat roofing system.

ClassicBond Water Cut-Off Mastic

For use in a compression termination, this one part mastic is used in a variety of situations where a compression termination of the ClassicBond EPDM membrane is required.



Features

Each tube covers 3 linear metres.
This is only to be used as a compression type mastic, not as a sealant for wall chases or gaps.
For full usage details refer to the ClassicBond Installation Manual.

ClassicBond One & Two Part Pourable Sealer

For sealing around difficult penetrations e.g. soil pipes, balcony rails. The pourable sealer is available in two types and is used with Pipe Box Pockets, Lap Sealant and ClassicBond EPDM Primer. Simply install the pocket, prime and pour. Choice of 100mm, 150mm & 200mm Box Pockets for all penetration types.

Two Part Pourable Sealer

- Quick curing time after mixing.
- Faster install than taping in details.
- Used as a tie-in between EPDM and a built-up roof surface.
- 3.78 Litre pail fills over seven 100mm pockets.
- Best & most economic option for multiple penetrations.

One Part Pourable Sealer

- Ready to use - no mixing required.
- Pouch can be resealed with original cap.
- Provides a flexible and durable seal around hard to flash penetrations.
- Water-tight seal in less than one hour.
- Cures to a 50mm deep solid rubber seal.
- 2 litre pack fills up to four 100mm pockets.



ClassicBond® the original EPDM

ClassicBond Plastisol Steel Edge Trim & Termination Bars

Available as 100mm wall flashing and 75-175mm deep perimeter trim. Wall trims offer an economical alternative to lead and are not susceptible to theft. Featuring a 100mm face with 25mm return into the wall, fixed in to the wall with RB fasteners.

Perimeter trims feature a drip return on the bottom, with a range of stock sizes from 75mm to 175mm available.

Termination Bars are used to create a compression seal to upstands if cutting a chase isn't possible and as a compression join to neighbouring roof systems.

Features

3 metre lengths for efficient installation.
For full usage details refer to ClassicBond Installation Manual.



ClassicBond RB Trim Fasteners

ClassicBond trim fasteners are low profile fasteners complete with an EPDM washer to create a watertight seal. Used when mechanically fixing wall trims and Plastisol edge trims.

Features

35mm and 45mm lengths.
Supplied with star drive bit.
Low profile, colour coded to match plastisol trims.



ClassicBond Roof Outlets

The range of ClassicBond outlets provide the installer with a fast, effective method of detailing to flat roof outlets.

ClassicBond 68mm Flat Roof Outlet

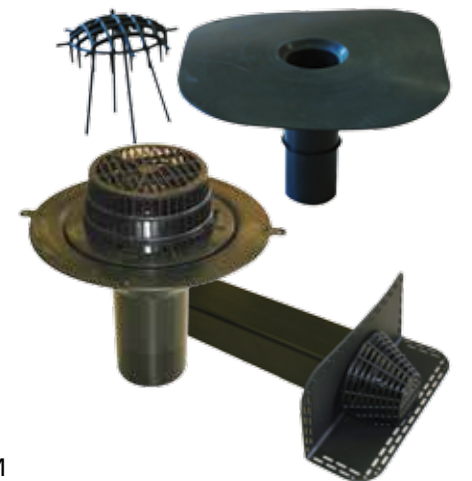
The pre-formed 68mm outlet is a fast, efficient method of connecting ClassicBond flat roofing systems to existing 68mm internal rainwater pipes on domestic and small commercial roofs. Seamed to the membrane with 228mm PS Tape and EPDM Primer.

ClassicBond Horizontal Roof Outlet

The horizontal roof outlet is designed as an outlet through parapet walls and pitched roofs as well as the potential to be used as a vertical drain in box gutters. Seamed to the membrane with 228mm PS Tape and EPDM Primer.

ClassicBond 110mm Top Drain

Top Drains give a fast, clean and secure method of joining ClassicBond EPDM membranes to 110mm rainwater pipes for larger flat roofs and commercial properties. The outlet is joined to the EPDM membrane with the integral clamping ring and water cut-off mastic.



SURE EDGE



Sure Edge PVC Perimeter Trim

High quality, durable roof edge trim manufactured from co-extruded uPVC, the same technology trusted by the industry to manufacture uPVC solid fascia, and ready to install straight out of the box. Providing a neat, simple and fast finishing detail for the edge of any flat roof.

Supplied in 2.5m lengths, easily cut on site using traditional roofing tools leaving no sharp edges. The pre-drilled trims save time and improve accuracy when installing.

Check Kerb Trim

Fast and easy to install with pre-applied water seal. SureEdge trims are solid cored for strength and removes the need & cost of additional caps used in hollow trims.

Features

Black or White with smooth, gloss appearance.
Pre-applied water seal & pre-drilled fixing holes.
Market Leading quality.



Gutter Trim - Built in Batten or Standard Back Plate

Fast and easy to install with pre-applied water seal on clamping trim. Choice of 'Built in Batten' saving the time and cost of additional timber back plate or 'Standard' Back plate to be fitted to existing batten drip edge. The two part drip edge trim securely clamps the membrane by mechanically fixing and prevents warping or popping experienced with 'clip in' systems. The outer trim section features built in water seal to accommodate different thickness membranes, seams and detail flashings.

Features

Black or White with smooth, gloss appearance.
Pre-applied water seal & pre-drilled fixing holes.
Choice of back plate thicknesses.



Built-in Batten



Standard Back Plate

SureEdge Trim - Complete System of Corners & Joiners

Both the gutter and check kerb trims have joiners, internal corners and external corners to allow for all roof details.

Kerb & Gutter Joiners

The joiners simply clip into place, made from the same gloss finish uPVC, creating a neat, seamless appearance.

External Corners

Both the gutter & check kerb have external corners details in both black & white. These components make the detailing of roof perimeters fast and easy without having to make any compromise.

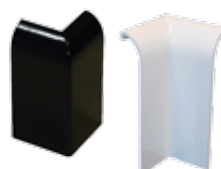
Internal Corners

Both the gutter & check kerb have internal corners in both black & white. These components make the detailing of roof perimeters fast and easy saving the need & time of trying to manufacture neat corners on site.

Corners are either glued or fixed in position.



Joiners



External Corners



Internal Corners

ClassicBond®

the original EPDM

Installation Guide

Easy, simple and fast installation with the original EPDM membrane and accessories.
Full guide available at www.classicbond.co.uk

A Installing the Membrane

- 1 Unroll the ClassicBond EPDM membrane over the substrate so that the sheet is in position and wrinkle free.
- 2 ClassicBond Water Based Acrylic Adhesive is intended for bonding to timber surfaces only. Other surfaces must be installed with ClassicBond Bonding Adhesive. Roofs over 100m² must be installed with Bonding Adhesive.
- 3 It is essential for ClassicBond EPDM membrane is allowed to relax prior to adhering. The time for this will vary depending on weather conditions.
- 4 Cut the membrane to length and position the sheet to achieve an overhang off the roof of at least 75mm (3") on both the length and width.
- 5 The RUSS (Reinforced Universal Secure Strip) should already be installed wherever the membrane turns up through an angle change. Fold the sheet onto itself so that one-half of the sheet is exposed.
- 6 Thoroughly stir the ClassicBond WBA Adhesive or Bonding Adhesive. Using a medium nap paint roller apply the adhesive to the substrate.
- 7 The adhesive must be applied to 100% of the surface in an even coat without globs or puddles. Alternatively apply a thin coat to the membrane and substrate.
- 8 Lay the sheet onto the coated substrate avoiding wrinkles by rolling the middle of the sheet first. Immediately after rolling the sheet into the adhesive, broom the membrane to achieve maximum contact.
- 9 ClassicBond WBA Deck Adhesive must not be used if temperatures are, or expected to be below 4C° within 24 hours.
- 10 If using Bonding Adhesive on the deck area the adhesive must be applied to the substrate and the underside of the membrane. The Bonding adhesive must be touch dry with no wet puddles or globules before the membrane is mated onto the deck.



B Reinforced Universal Securement Strip (RUSS)

PS RUSS is used to mechanically secure EPDM membranes to the substrate. The strip has PS tape pre-applied along one edge, and can be installed horizontally or vertically in conjunction with Seam Fastening Plates below the EPDM membrane for additional membrane securement. RUSS should be used at any angle change and at the entire roof perimeter on larger installations.

Seam Fastening Plates are used with RUSS to securely clamp the RUSS to the surface; these must be used in conjunction with the appropriate fasteners for the substrate.

- 1 Mechanically fasten the RUSS horizontally into the decking or into the upstand with the PS section being to the inside of the roof.
- 2 Apply ClassicBond Primer to the area on the underside of the EPDM membrane that will come into contact with the 75mm PS tape on the RUSS.
- 3 Once the primer is dry remove the protective strip from the PS tape on the RUSS. Lay the primed membrane into the PS tape with no wrinkles or air gaps and smooth in by hand then roll with hand roller.
- 4 Once bonded to the RUSS finish the upstand by using Bonding Adhesive to the remainder of the RUSS, upstand and membrane.



*Other UK EPDM distributors state that base ties-ins aren't required on roofs under 100m². The membrane, irrelevant of size, will pull to the centre and eventually pull away from the wall.

C Bonding Adhesive

ClassicBond Bonding adhesive is used on all vertical surfaces on the roof area, e.g. wall upstands, batten and sky light edges. This adhesive will work on porous and non-porous surfaces, providing they are clean and dry. The Bonding glue will enable tight angles to be formed quickly and easily to give great product versatility.

- 1 Apply the Bonding adhesive to the side of the RUSS or exposed decking. Also apply the Bonding adhesive to the relevant upstand termination or step down and to the back side of the ClassicBond membrane.
- 2 Once the adhesive has become touch dry with no wet puddles, mate the two surfaces together. Leaving no voids between the ClassicBond membrane and the receiving surface.
- 3 Applying positive pressure to the membrane work the membrane up the upstand to the desired height. These areas should be rolled to achieve a strong bond between membrane and substrate.



D Seaming with 76mm PS Tape

The membrane should be positioned so that the width of the seam is 75mm (3"). Mark a line 5mm (1/4") from the leading seam edge.

- 1 Fold the top sheet back to expose the seam area. Using a scrubbing pad apply the ClassicBond Primer to the seam area. Apply the primer past the seam edge to the line. ClassicBond Primer must be dry before application of PS tapes.

NOTE: If the EPDM membrane is contaminated with dirt, etc., clean the seam area before application of primer.

- 2 Using moderate pressure set the Seam Tape into place to keep air from being trapped under the tape and unroll the 75mm wide tape along the length of the seam, aligning the Seam Tape (not the clear backing) along the chalk line. Care must be taken not to get any bubbles or wrinkles in the tape.
- 3 Lay the top membrane onto the Seam Tape. Pull away the poly backing from the tape at a 45° degree angle to the seam. While removing the poly backing, draw your hand across the seam, from the back to the leading edge. Roll the seam at right angles to the seam direction, not along it.



E 152mm PS Cover Strip

When butt jointing of ClassicBond membrane or seaming to a metal drip or similar a 152mm cover strip is used. This tape is not for detailing of corners, pipes or penetrations.

- 1 Ensure there is no gap between the membrane when butt jointing. The 152mm tape should be centrally located over the joint.
- 2 Apply ClassicBond Primer to the area to be seamed. Apply primer 80-100mm either side of the join in the EPDM sheets.
- 3 Once the ClassicBond Primer has dried, peel back 150mm of the poly backing and press the PS tape into the primed area. Once the tape is held in position, peel back the poly backing and smooth the tape into the primed area. Progress along the seam.
- 4 Once the entire length of tape is applied to the seam, roll across the 152mm tape with hand roller.
- 5 Where 152mm tapes intersect other tapes, 228mm uncured tape cover patches must be applied.



228mm PS Uncured Flashing Tape

This tape is used for any detail work necessary on the roof. It has the ability to mould to almost any shape and will adhere to most surfaces, provided the surface is clean, dry, and correctly primed with the HP250 primer.

If submersion of 228mm PS Flashing may occur, all edges should be protected with ClassicBond Lap Sealant. Lap Sealant helps to prevent water infiltrating between the flashing ply and the tape ply before the flashing has fully cured on the roof.

F Internal Corner with 228mm PS Tape

- 1 The fold should be cut back to leave a 75mm wide flap. Apply ClassicBond EPDM Primer to the front & back of the flap and to the membrane on the wall. ClassicBond Primer must be allowed to dry before application of PS tape.
- 2 Cut an appropriate size piece of 228mm uncured flashing (min. 50mm wider than the flap of membrane), press the flap back to the upstand and install the uncured flashing tape.
- 3 Roll the taped area with hand roller once installed.



G External Corners with 228mm PS Tape

- 1 Cut the ClassicBond EPDM membrane at 45° angle to allow the membrane to run around the corner and create both upstands. Bond in place with ClassicBond Bonding Adhesive. Cut a section of 228mm Uncured PS tape to a min. 75mm onto deck and 50mm past angled cut in membrane.
- 2 Apply ClassicBond Primer to the marked area to be flashed and allow to dry. The area must be clean and dry before application of primer, apply primer to membrane and to upstand substrate. ClassicBond Primer must be allowed to dry before application of tapes.
- 3 Start installing the tape from the top point. Work the tape down upstands first and into the bottom angle change.
- 4 Work the tape onto the deck around the corner and smooth out and roll the entire flashing with hand roller.



H Pre-Fabricated Pipe Seal

Using either the small or large pipe boot, the area for the boot to be adhered to must be dry and clean.

- 1 Cut the ClassicBond PS Pipe Seal above the raised "rib" one size smaller than the pipe diameter. DO NOT CUT THROUGH THE RIB.
- 2 Pull pipe seal over pipe until base flange is in contact with the ClassicBond EPDM membrane.
- 3 Once in position clamp the seal to the pipe with the supplied metal clamp and mark around the base of the seal to give a line to prime up to. Pull pipe seal upwards on pipe to expose the membrane and apply ClassicBond EPDM Primer to the EPDM deck membrane.
- 4 Pull pipe seal back down over pipe and into position. Remove poly backing from the tape and with hand pressure press tape onto primed area. Roll splice area with a hand roller.
- 5 Apply ClassicBond uncured T-Joint Patches where pipe seal intersects a field splice.

NOTE: Temperature of the pipe must not exceed 82° C (180° F)



Fabricated Pipe & Penetration Flashings

To fabricate a pipe boot with 228mm tape follow the procedures in the full ClassicBond manual at www.classicbond.co.uk

Outlets & Drains

There are two basic methods for sealing to an internal drain. ClassicBond Pre-made outlets of various types can be used for standard outlets or an on-site method may be used for non-standard outlets with 228m PS tape.

I Anti-backup drain for 68mm outlet

These are 68mm roof outlets designed to be inserted into the existing 68mm diameter down pipe. The outlet is fitted with an anti-backup seal to achieve a watertight join. The outlet is attached to the membrane using 228mm PS uncured flashing tape. A Leaf grate for this outlet is also available.

- 1 Cut the outlet flange back to leave a min. 50mm head and cut the membrane back to meet the perimeter of the outlet head. Secure the outlet into the decking and apply ClassicBond Primer to the head of the outlet and to the EPDM membrane.
- 2 Apply the Uncured PS tape to the primed area. Once fitted cut a small section from the centre of the tape out to expose the outlet opening and press the remaining tape down into the outlet. Roll the entire flashing with hand roller.
- 3 Finally install the leaf grate to complete the 68mm flat roof outlet.



J ClassicBond Top Drain

These are designed for 110mm flat roof outlets to allow high water flow on larger roofs.

- 1 Fit the outlet into the roof before installing the membrane; ensure the outlet has the yellow protective cap installed. Install the ClassicBond EPDM membrane to the roof and over the outlet, place cutting guide over the pin and cut round the circular plate.
- 2 Remove the circular section of membrane and the yellow protective cap from the outlet.
- 3 Insert a bead of ClassicBond Water Cut Off mastic between the underside of the membrane and the top flange on the outlet. Screw in the clamping ring till it's completely tightened. Use the two tightening lugs to apply leverage to the ring.
- 4 Install the leaf grate into the three locating tabs.



K Angled Roof Drain

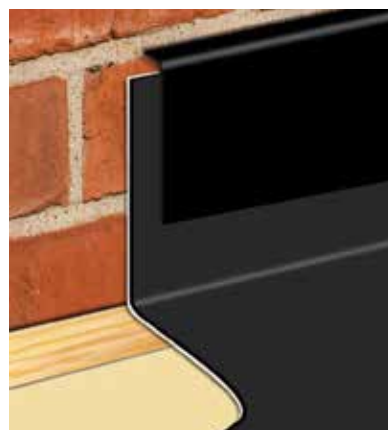
For roofs designed with horizontal drains to go through walls and pitched roofs. The ClassicBond Angled Roof Drain is fitted to the deck and sealed to the membrane using 228mm PS Uncured flashing tape.

- 1 Install outlet into parapet wall before installing EPDM membrane. Install the ClassicBond EPDM membrane over the outlet with ClassicBond Bonding Adhesive.
- 2 Cut the EPDM membrane away from outlet opening by 50mm. Apply ClassicBond Primer to the membrane, outlet face and into the outlet pipe.
- 3 Install Uncured PS tape to the outlet. This should be large enough to join onto the membrane by a minimum of 50mm. Cut a small square out of the middle of the tape and mould the tape into the outlet pipe by 25mm.
- 4 Cut a second section of 228mm PS tape 100mm wide. This will be inserted into the outlet pipe to reinforce and lengthen the tape that was turned into the pipe by 25mm. Apply ClassicBond Primer to outlet pipe and to already installed tape before application.
- 5 Once the second section of tape is installed, complete by inserting the leaf grate into the outlet.



L ClassicBond Wall Trim

- 1 Before the membrane is laid, cut a chase into the mortar line a minimum of 150mm above the flat of the roof surface, at least 25mm deep. Clean all dust and debris from the chase, wall and roof area.
- 2 Ensure the membrane is fully bonded up to the chase with ClassicBond Bonding Adhesive.
- 3 Insert the wall trim into the chase and fix at max of 300mm spacings with ClassicBond RB fasteners. Overlap trim end by minimum of 150mm.
- 4 To bend round corners simply snip the top 25mm edge and bend to create the desired angle.
- 5 Seal the top edge of the trim to the wall with ClassicBond Lap Sealant.



M Coping Stone Parapet

- 1 Lay ClassicBond EPDM 2/3rds across the wall, using Bonding adhesive and apply a bead of water cut off mastic under the outside edge of membrane and compress.
- 2 Apply an even bed of mortar from the membrane and onto the out brick wall.
- 3 Lay suitable coping stones ensuring they have sufficient over hang and drip channels.

SURE EDGE

N Sure Edge Perimeter Trim

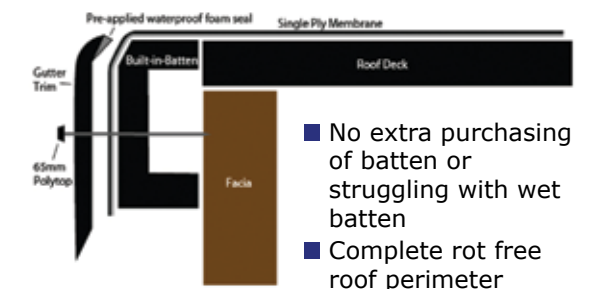
Sure Edge Gutter System

This is available in two options, standard and built in batten back plate. The standard requires a timber batten to be installed first then the back plate fixed to it. The "Built in Batten" doesn't require the extra timber batten.

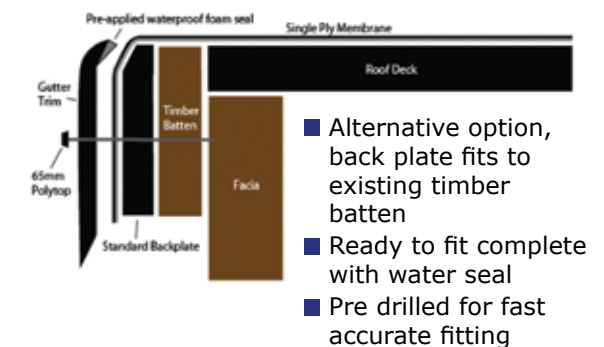
- 1 Fix the 25mm x 40mm back plate to the fascia at the edge of the roof.
- 2 Allow minimum 50mm ClassicBond membrane to go over the back plate.
- 3 Position the front plate with foam seal to clamp the membrane between the 2 sections and fully fix into place with supplied fixings.
- 4 Between lengths allow 2.5mm expansion joint for each trim.
- 5 All corners are adhered or fixed in place with polypins.

Note: In areas of high wind, exposed areas and high buildings additional fixings between pre-drilled holes is recommended.

Gutter trim – built in batten



Gutter trim – standard back plate



Sure Edge Check Kerb System

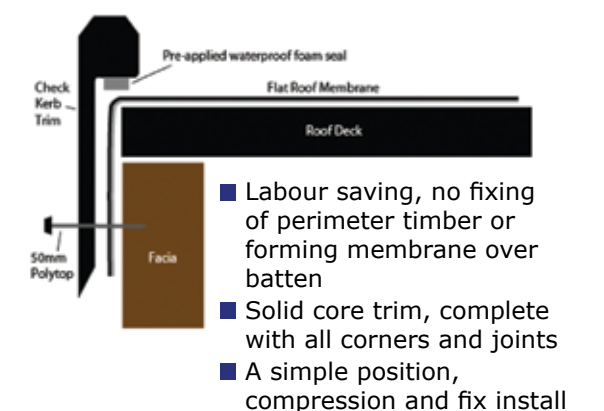
Used to create upstand and edge trim in one go. The Kerb trims have pre-applied water seal for fast, tidy installations.

- 1 Lay membrane and allow minimum 75mm overhang.
- 2 Ensure membrane is clean, position edge trim and firmly push down to compress water seal by min. 30%.
- 3 Fix trim into place using supplied PolyTop fixings.
- 4 Between lengths allow 2.5mm expansion joint for each trim.
- 5 All corners are adhered or fixed in place with polypins.

Note: If a secure fixing cannot be achieved a timber fixer should be fitted to the vertical edge of the roof.

In areas of high wind, exposed areas and high buildings additional fixings between pre-drilled holes is recommended.

Check kerb – edge trim



The full ClassicBond Installation Manual is available to view and download at www.classicbond.co.uk.

All the information in this product sheet is based on practical experience and is published in good faith. However, because we have no control over the manner or conditions in which our products are used, or over work undertaken or end product manufactured by the purchaser, we cannot accept liability for results. Responsibility for ascertaining the suitability of products for their purposes rests with the purchaser. All conditions, representations, statements, warranties or guarantees whatsoever, whether express, implied or statutory, in respect of any goods manufactured, sold or supplied by us are hereby expressly excluded and we accept no liability in respect of any claim for damage or consequential loss caused to any property arising directly or indirectly out of the use of our products or goods. Flex-R Ltd. reserves the right to change product specifications without notice.