

The Numbers Do Not Lie

- EPDM flat roof membranes have a life expectancy of at least 50 years.
- Half-century track record of performance and durability.
- EPDM is Environmentally Friendly.

Unrivalled

- Unmatched weatherability
- Flexibility
- Economical
- First manufacturer to exceed 10 billion square feet of EPDM membrane production.
- Pressure-sensitive accessories available for virtually any penetration or detail.

For You

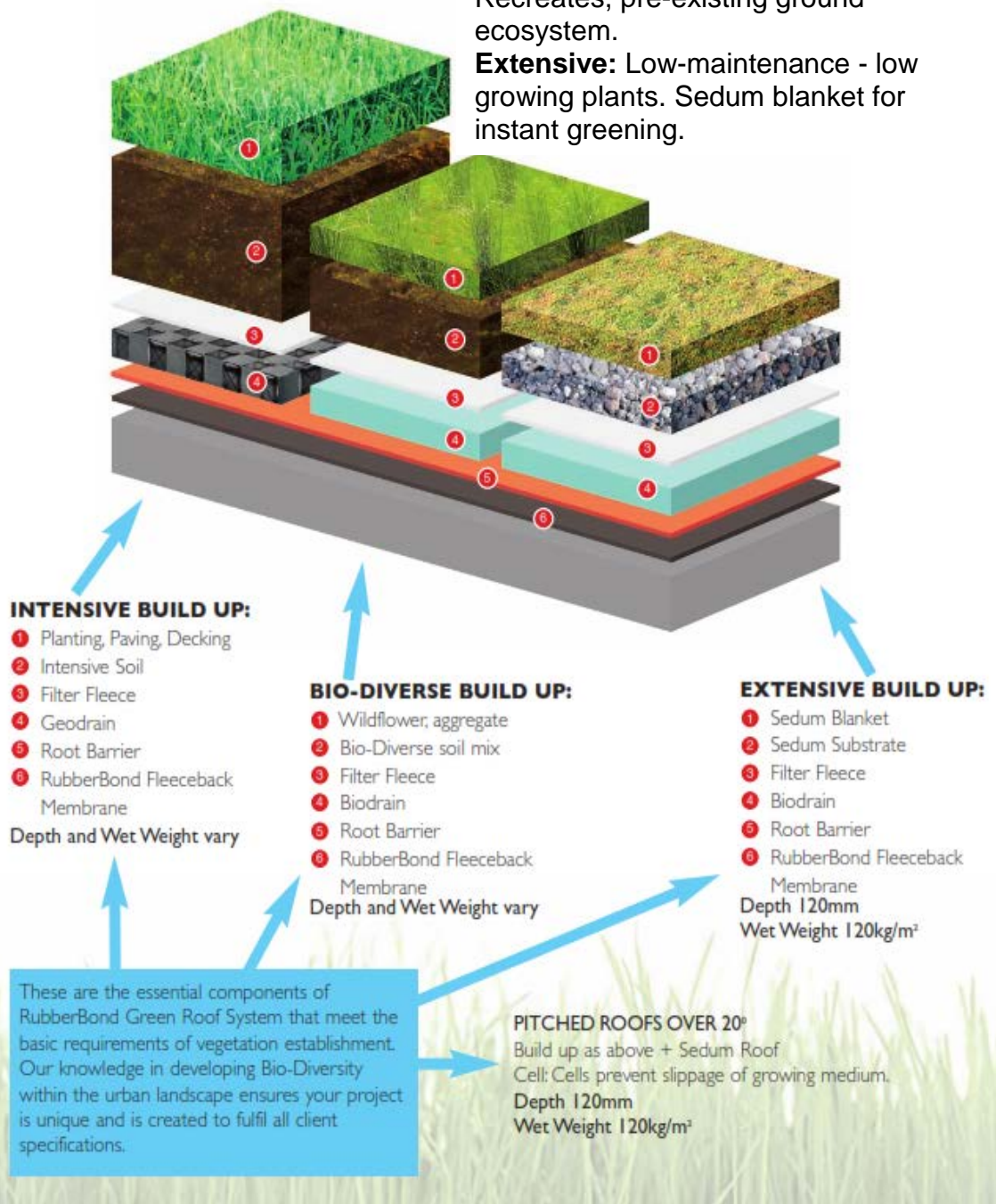
- Wide variety of sheet thicknesses and widths – To suit each individual project and customer needs.
- Seamless – Completely Reliable
- Safe – Heat free installation.

Depending on your criteria and the limitations of the roof space there are three types of Green Roof:

Intensive: High maintenance - Replicates a ground level garden. Provides new amenity space.

Bio-Diverse: No maintenance - local aggregate colonises naturally. Recreates, pre-existing ground ecosystem.

Extensive: Low-maintenance - low growing plants. Sedum blanket for instant greening.



The Numbers Do Not Lie

- **EPDM flat roof** membranes have a life expectancy of at least 50 years.
- **Half-century** track record of performance and durability.
- **EPDM is Environmentally Friendly.**

Unrivalled

- **Unmatched weatherability**
- **Flexibility**
- **Economical**
- **First manufacturer** to exceed 10 billion square feet of EPDM membrane production.
- **Pressure-sensitive accessories** available for virtually any penetration or detail.

For You

- **Wide variety of sheet thicknesses and widths** – To suit each individual project and customer needs.
- **Seamless – Completely Reliable**
- **Safe** – Heat free installation.

Green roofs are an age old solution to arid urban environments, nowadays they are increasing in popularity due to the many benefits being more relevant:

- Slows rain water run off to assist local SUDS planning and flood defences
- Remove CO2 and harmful pollutants from the atmosphere.
- Mitigate the Urban Heat Island effect.
- Regulate internal building temperatures.



- Insulate acoustically, reducing noise levels by up to 8db.
- Create new leisure space.
- Improve the quality of our urban centres and our lifestyle.



- Release water naturally through transpiration, improving water quality.
- Create new wildlife habitats for marginalised species.
- Improve building energy efficiency.
- Protect the roof from the elements and prolong its life.
- Improve thermal insulation lowering fuel bills significantly.
- Adds value to a property.

